

# State of Wyoming Corner Record

## CORNER PERPETUATION AND FILING ACT,

Regulations of the Board of Registration for Professional Engineers and Land Surveyors.)

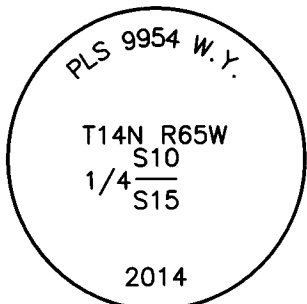
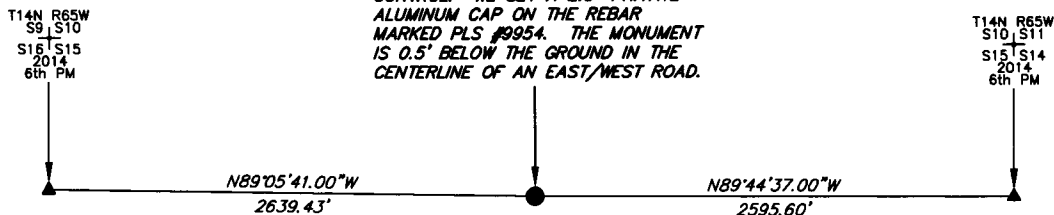
Reverse side of this form may be used if more space is needed.

Record of original survey and citation of source of historic information (if corner is lost or obliterated). Description of corner monumentation evidence found and/or monument and accessories established to perpetuate the location of this corner. Sketch of relative location of monument, accessories, and reference points with course and distance to adjacent corner(s) (if determined in this survey). Method and rationale for reestablishment of lost or obliterated corner.

**NOTE:**  
LINES SHOWN ARE BETWEEN MONUMENTS AND MAY OR MAY NOT BE SECTION OR SECTION SUBDIVISION LINES.

THE MONUMENT IS FOR: T14N R65W S10 1/4 S15 2014 6th PM

*FOUND #6 REBAR AT THE LOCATION FOR THIS 1/4 CORNER OF MAXIMUM CONTROL. WE SET A 2.5" PRIVATE ALUMINUM CAP ON THE REBAR MARKED PLS #9954. THE MONUMENT IS 0.5' BELOW THE GROUND IN THE CENTERLINE OF AN EAST/WEST ROAD.*



THE MONUMENT IS MARKED

Date of Field Work: 01/30/2014 Office Reference: \_\_\_\_\_

**CORNER MONUMENT SYMBOLS**

- RECORD IS FOR THIS CORNER MONUMENT.
- ▲ A RELATED CORNER OR WC MONUMENT.

SCALE 1"=1000'  
(EXCEPT IN TRIVIAL CASES)  
BEARINGS ARE RELATED TO WGS 84 WITH GPS OBSERVATIONS  
DRAWN BY: SM  
P.C. D. SWANSON  
COUNTY: LARAMIE

**CROSS INDEX DIAGRAM**

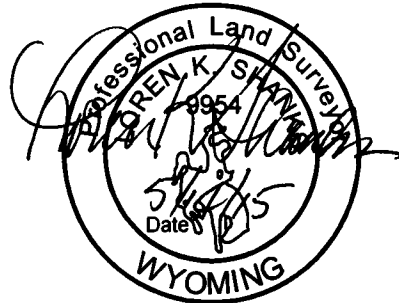
A	1	2	3	4	5	6	7	8	9	10	11	12	13	14	15	16	17	18	19	20	21	22	23	24	25	A	
B																											B
C		6			5				4					3					2								C
D																											D
E																											E
F																											F
G			7			8				9				10					11								G
H																											H
J																											J
K																											K
L				18			17				16				15					14							L
M																											M
N																											N
O																											O
P					19			20				21				22				23							P
Q																											Q
R																											R
S																											S
T						30			29				28				27				26						T
U																											U
V																											V
W																											W
X																											X
Y																											Y
Z																											Z
	1	2	3	4	5	6	7	8	9	10	11	12	13	14	15	16	17	18	19	20	21	22	23	24	25		

Firm/Agency, Address

UELS, LLC  
85 South 200 East  
Vernal, Utah 84078  
Telephone Number: 435-789-1017

This corner record was prepared by me or under my direction and supervision.

SEAL & SIGNATURE



1/4 CORNER OF MAXIMUM CONTROL  
Corner Name: SOUTH 1/4 CORNER OF SECTION 10 Section: 10 T. 14N R. 65W ; 6TH P.M. Cross Index No.: J-15  
SBRPEPLS/PLSW: March 1994 (CLCR...SJA)



REC# #: 670086  
RECORDED 9/22/2015 AT 10:41 AM BK# 2465 PG# 94  
Debra K. Lathrop, CLERK OF LARAMIE COUNTY, WY PAGE 1 OF 1